

"Let there be light" and the light was eternal: A Meta-Religious understanding of Creation and Consciousness

Contzen Pereira*

Abstract

"God is the light of the world and may his light shine before all" (Mathew 5: 14-16). The creator is the symmetric light which gave rise to asymmetric matter along with abundant cosmic energy that currently resides in the matrix of the universe; for the symmetry was broken with the big bang to create the universe. In the physical world, matter gave rise to biological structures to possess the electromagnetic soul and its processes; a localized form created of the cosmic energy; in religion what we call the Spirit. Eternal cosmic energy is the source that supports the localized cloud of photons or the electromagnetic soul within temporary matter; propagates information across the systematic biological make up of matter; a key to the phenomenon of consciousness within the physical. Matter if corrupted or altered, leads to an imbalance in the life processes which can be healed with support from the eternal cosmic energy, as a healer for the soul. God is light; and in him there is no darkness (John 1: 1-5); for the creation was created of this light; filling the cosmos with the Spirit. Thus, we may know the 'how' of creation of the universe, its matter and its consciousness, but the 'why' shall remain eternally phenomenal.

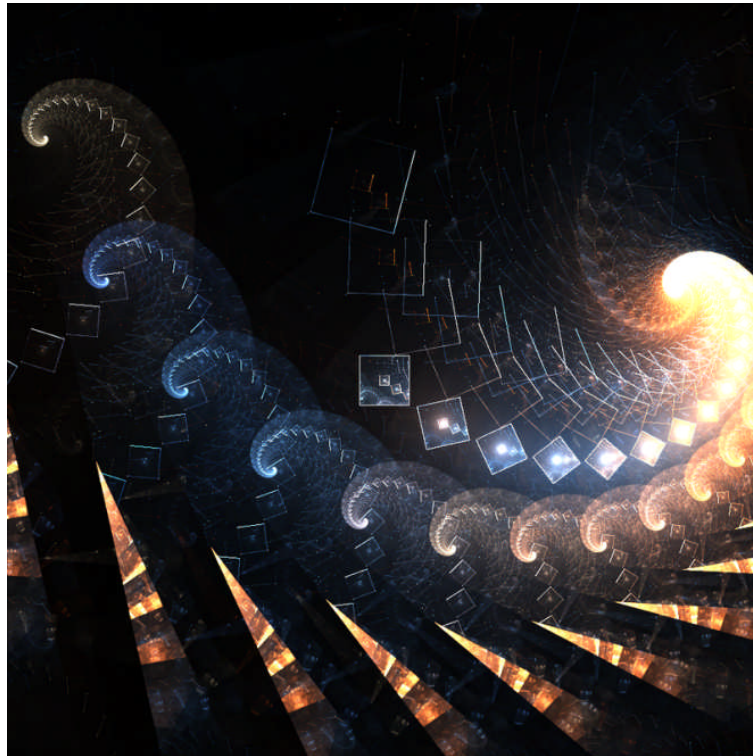
Key Words

Consciousness, Creator, Matter, Light, Cosmic Energy

*Corresponding Author. Address: Nandadeep, 302, Tarun Bharat Soc, Chakala, Andheri (East), Mumbai 400 099, India.

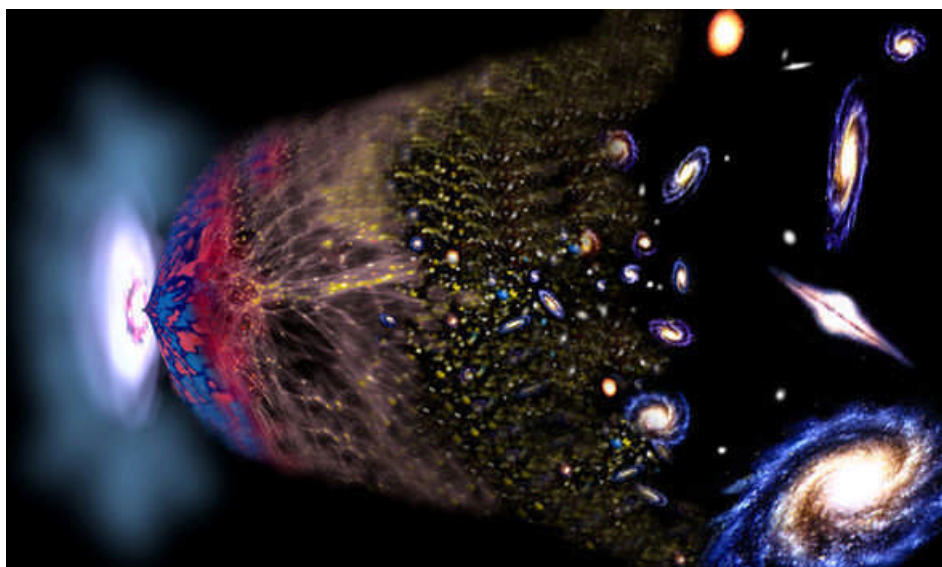
Email Address: contzen@rediffmail.com, contzen@gmail.com

Metaphysics of Light and Matter



(Image: From a singularity fractal by ikill animation)

God said, “Let there be light”: and there was light (Genesis 1:3). If this chapter of Genesis was written by a physicist, this statement would have read as – God said, “Let there be electromagnetic radiation”: and there was electromagnetic radiation, an asymmetry beyond imagination. Michio Kaku, puts it in much more scientific manner, *“In the beginning, God said that the four dimensional divergence of an antisymmetric second rank tensor equals zero and there was light”, and “there was light, and it was good”* (Kaku 2006). According to the “Philosophy of Illumination” as stated by Suhrawardi, light is the producer for all forms and operates at all levels; produces immaterial intellects such as angels, souls of living beings and the body (Walbridge 2000). According to the Koran, 'Allah is the light of the heavens and the earth,' and which also correlates with ancient Hindu writings, 'Lead me from darkness to light, lead me from the unreal to the real.' (Surat An-Nur 24:35; Bṛhadāraṇyaka Upaniṣad 1.3.28.). The creator that we humans call ‘God’ is the symmetric form of light; the cosmic energy; the creator of matter and all of matter and the universe; the asymmetric forms of light.

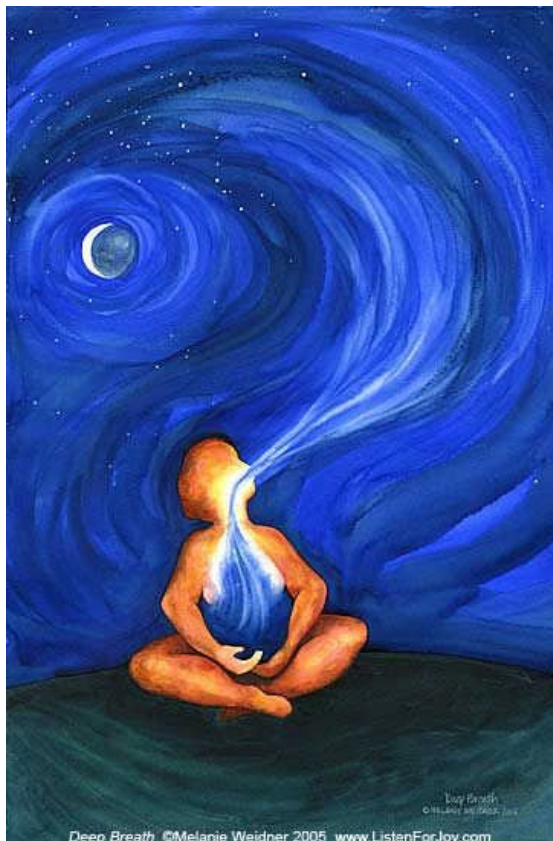


(Image: Inflation by express.co.uk)

The creation began with the formation of the most primitive energy form; the cosmic energy that gave rise to asymmetric matter in a phenomenal event differing the law of matter and anti-matter annihilation. This gave rise to forms such as electromagnetic radiation, an important ingredient of life; for he knew that there would not be life without an energy source. Connected through energy and with the energy that resides within can makes us understand each of our desires, to understand the created universe and to appreciate its beauty (Pereira 2015). Electromagnetic radiation is a primitive form of energy and currently our knowledge and use of this energy is need-based, just like the brain; we use it only to the limit of our requirement (Fenchel 2003). Electromagnetic radiation is an energy source that has great potential and was created, so that it could be utilized by every living creature in this universe to perform tasks beyond imaginations powered by the cosmic energy. This radiation is mediated by the electromagnetic force generated by photons; small packets of energy that hit an atom to excite electrons from a ground state to a excited state and bring about a cascade of excitations and relaxations, a process known as the 'photoelectric effect' (Cassidy 2004).

Matter is a form of asymmetric light and is made up of atoms, which comprise of the sub-atomic particles. The living being is a form of organized matter that is shaped and designed by atoms and sub-atomic particles. The creator, the physicist, the symmetric form of light, created matter which can never be altered or changed, created or destroyed, but can definitely be transformed from one form to another. Every living being, is made up of matter; with matter forming the biological structures and eternal matter its driving force along with the cosmic energy. The architecture of the being and its biological structures are said to be complete, only when all the structures, pathways and its contents are appropriately shaped and perfected to acknowledge the eternal matter to propagate life

and the Spirit. "Do you not know that your bodies are temples of the Holy Spirit, who is in you, whom you have received from God and that you are not your own? (Corinthians 1: 6:19).



(Image: Deep Breath by MelanieWeidner)

Metaphysics of Existence

Life exists, because of the creation of asymmetric matter and guidance is provided to every living being by means of the Spirit through matter (Corey 1993), for everything is matter other than God and the Spirit, according to the Thomistic philosophy of Saint Thomas Aquinas (Phillips 2015); here the Spirit is the cosmic energy while within the physical body resides as photons; the electromagnetic soul. Matter has weight, occupies space and can be touched and measured, which does not apply to the Spirit, who are immortal; non-physical. In the old testament, Moses said, "And the Lord your God spoke to you out of the midst of the fire; ye heard the voice of the words, but saw no similitude; ye only heard a voice (Deuteronomy 4:12) this has been confirmed in the new testament by Jesus, who defines God as "Ye have neither heard his voice at any time, nor seen his shape; for God has no form or shape" (John 5:37). Eternal matter is the soul; an incorruptible form of energy created from asymmetric matter and made up of a blend of photons of scores of wavelengths, supported and guided by the cosmic energy we call Spirit; the eternal symmetric light.



(Image: Pantheism by rapineal.com)

Temporary matter is susceptible to corruption, which will result in slow decay of the matter when in an undesired state, eventually leading to death or release of the electromagnetic soul to the non-physical form. For Aquinas, temporary matter is a biological structure, vulnerable to corruption and dissolution, as they are composed of materialistic things (Fitzpatrick 2013). A corrupted temporary matter can be healed by the electromagnetic soul but up to a certain threshold, in case the damage is beyond repair, it would lead to death and liberation of the electromagnetic soul. Ageing is also a form of programmed corruption that is guided by the electromagnetic soul and increases with multicellularity, which is a price paid to reduce entropy (Navratil 2011, Bortz 1986). When the interaction is new, it is highly energetic and effervescent, but with age, this interaction starts becoming insubstantial as the electromagnetic soul strives to keep up with the corrupting biological structures, which in due course is released on death. All temporary matter emits electromagnetic radiation in the form of photons, which unite with the overall electromagnetic soul or eternal matter to be reprocessed. Biophotons or ultra weak photons (UPE) are persistently being emitted in the visible and ultraviolet spectrum from biological systems (Cifra et al 2015) and increase in amounts during stress (Rahnama et al 2011).

God does not decide fate; God guides the process of evolution that decides the fate of living beings. Henry Laurency wrote in "The Knowledge of Reality", "The great cosmic evolution does not work according to a predetermined plan. Only the final goal is laid down; all monads acquiring omniscience about the whole cosmos and evolution itself creates the conditions and possibilities of its growth" (Laurency 1979). Higher intelligence, leads to higher disorder and is considered as higher entropy in the laws of physics and with evolution the life cycle of intelligent beings is abridged; a price paid to reduce entropy (Wissner-Gross and Freer 2013). Amoeba proteus is a protozoan that is considered to be immortal, as it never dies, but it transforms from one form to another (Obstfeld 1996). This protozoan has the capability of transferring its soul during its biological life cycles, which is definitely a

property lost with multicellularity and intelligence. Intelligent and multicellular beings have a higher dependency on the electromagnetic soul for their life processes, as compared to a unicellular organism and therefore, the creator has created superfluous amounts of cosmic energy in the universe, for it was known at some point of time, consciousness would promote evolution of higher and intelligent beings, which would lead to higher entropic changes. The creator for sure is a planned biophysicist; the one who created all it.



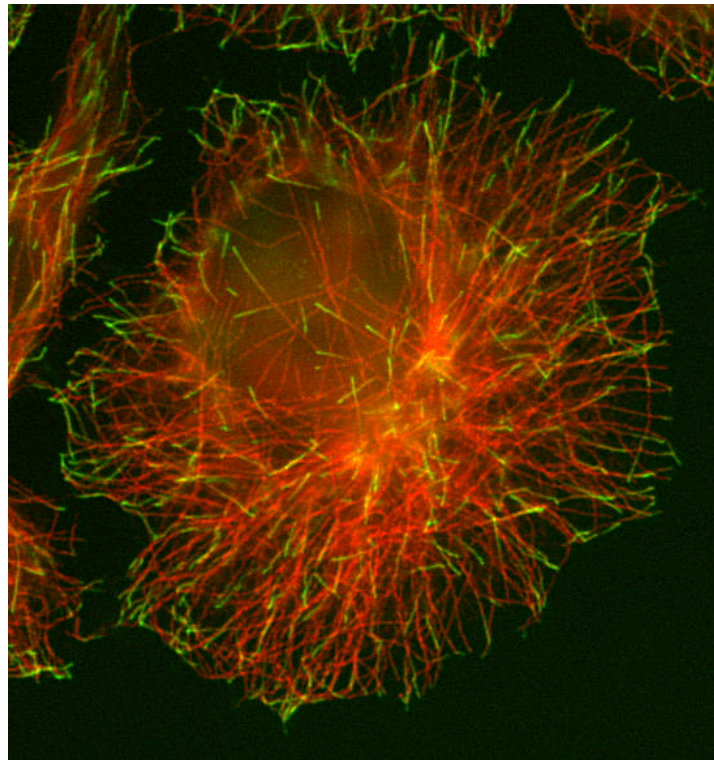
(Image: Protozoan by gifovea.tumblr.com)

Life is an acquaintance created by the confederation of the electromagnetic soul and the biological make-up of temporary matter and its complexity, gives rise to local consciousness, which grows and helps to grow with the evolution of multicellularity and division of labour. The plan of the creator is one without any flaws and if ever there is a flaw it would be not be considered as one, as the creator and the Spirit are non-local, pure and incomparable to immaterialistic bound matter. Everything is good and everything was created from goodness to be good and to remain good, all that needs to be grasped is the goodness that resides in the cosmos and within us (Pereira 2016).

Metaphysics of Consciousness

To be conscious means to be aware, and to be aware means to perceive; a facet created by the creator, by intermingling matter with matter. Propagation and interaction of the electromagnetic soul with the biological make-up of temporary matter generates localized consciousness; a sense of awareness used as a support system by living beings to perform valuable life processes. Consciousness generates knowledge through perception, which is displayed by living beings as intelligence (Gregory 1997). Biological structures help build a level of intelligence in living beings which grows with multicellularity and division of labour (Kuyucu et al 2010). According to psychiatrist Richard Bucke, level of consciousness differs

with intelligence, higher the intelligence greater is the level of awareness of the universe (Bucke 1905) which has been deciphered by Hameroff and Penrose in their “ORCH OR’ theory (Hameroff and Penrose 2014). The creator created the electromagnetic soul fed by the cosmic energy, to guide the flow of consciousness through biological structures and to maintain its uniformity during the process of evolution, for the creator was aware of the new multifarious structures that were in the progression of being created.



(Image: MT plus end by jefz.com)

Intelligence is knowledge gained through awareness or consciousness and is present in all living forms with or without a neural system but can be differentiated based on the complexity of multicellularity. A single biological cell is intelligent, but a collection of cells, demonstrates higher intelligence, which can be observed in bacterial biofilms when compared to the nervous system (Westerhoff et al 2014). As per the plan, the electromagnetic soul propagated consciousness, which helped build structures or organs which higher level of intellectual capability like the brain. During the course of evolution, intelligence in beings was limited to nutrition and survival, which then focussed on reproduction and now is dependent on the brain, which manages all functions in higher beings (Nunn et al 2014). Today, the human brain is the smartest organ known and is constantly evolving towards a level of superior performance to support complex cognitive functions (Bressler and Menon 2010). But despite of the complex architecture in the brain and its multicellularity, the key to intelligence and consciousness stays with the

irreplaceable interaction of the localized electromagnetic soul and temporary matter but is yet to be understood from a non-local stand-point.

Corruption of temporary matter prevents the propagation of the electromagnetic soul, leading to an obstruction of consciousness and bereavement of intelligence. According to Socrates, “The soul is not the sort of thing that can have intrinsic principles of deterioration or corruption” (Plato 428BC-348BC) for it is eternal matter, while Plato explains the body as a hindrance to the pursuit of wisdom (Phaedo, 61C-69E), which can be subjected to corruption and deterioration. Corruption can therefore be healed by the electromagnetic soul guided by the Spirit; the eternal cosmic energy, but in case the damage is beyond repair, it leads to death, and releases the electromagnetic soul that merges with the non-local cosmic energy. During this process, there is high state of excitation and release of photons, which is an attempt of revival of consciousness by the electromagnetic soul and wholly depends on the level of change exhibited by the temporary matter.



(Image: 9 Key components of shift by Dylan Charles)

Conclusions

Several years after the creation of life, Jesus described God as “I am the light of the world; whoever follows me will never walk in darkness, but will have the light of life”. The electromagnetic soul was created from the cosmic energy, to guide eternal matter and propagate local consciousness, for it was known, that consciousness was needed to be transmitted across the biological architecture for life to exist; it needs to travel speeds greater than that of light. In the process, the creator created a localized unicellular quantum based system, that eventually evolved to form a multicellular quantum based system which now processes and functions at speeds beyond imagination, maintaining a higher cognitive state of performance. In actual, the non-local world is in itself superluminal and in fact slows down when trapped in matter, to control consciousness and intelligence.

References

- Bortz WM. 1986. Aging as entropy. *Experimental Gerontology*. 21(4-5):321-8.
- Bressle SL and Menon V. 2010. Large-scale brain networks in cognition: emerging methods and principles. *Trends in Cognitive Sciences* 14: 277–290.
- Bucke RM. 1905. *Cosmic Consciousness: A Study in the Evolution of the Human Mind*. Innes & Sons. pp. 1–2.
- Cassidy D. 2004. *Einstein and Our World, Second Edition (Control of Nature)*. Humanity Books; 2 edition. ISBN-10: 1591022568.
- Cifra M, Brouder C, Nerudova M, Kucera O. 2015. Biophotons, coherence and photocount statistics: a critical review. *Journal of Luminescence*. 164. DOI: 10.1016/j.jlumin.2015.03.020 (<http://arxiv.org/pdf/1502.07316.pdf>) Accessed on 30th May 2015.
- Corey M. 1993. *God and the new cosmology*. Rowman & Littlefield Publishers. ISBN-13: 978-0847678020.
- Fenchel T. 2003. *The origin and early evolution of life*. Oxford University Press, USA. ISBN-13: 978-0198525332.
- Fitzpatrick A. 2013. *Bodily identity in scholastic theology*. (http://discovery.ucl.ac.uk/1411124/1/FITZPATRICK_730544%20PhD%20Thesis.pdf) Accessed on 29th May 2015.
- Gregory RL. 1997. Knowledge in perception and illusion. *Philosophical Transactions of the Royal Society of London B* 352: 1121–1128.
- Hameroff S and Penrose R. 2014. Consciousness in the universe. A review of the ‘Orch OR’ theory. *Physics of Life Reviews* 11, 39–78.
- Kaku M. 2006. Reading the mind of God. *Subtle Energies & Energy Medicine* 11 (1): 49 – 72.
- Kuyucu T, Trefzer MA, Miller JF, Tyrrell M. 2010. An Investigation of the Importance of Mechanisms and Parameters in a Multicellular Developmental System. *IEEE TRANSACTIONS ON EVOLUTIONARY COMPUTATION*, 1 – 32.

Laurency HT. 1979. The knowledge of reality. Translated by Lars Adelskog. (<http://www.laurency.com/index.html>) Online book accessed on 30th May 2015.

Navratil V. 2011. Health, ageing and entropy. *School and Health*, 21. Health Literacy through Education.

Nunn AVW, Guy GW, Bell JD. 2014. The intelligence paradox; will ET get the metabolic syndrome? Lessons from and for Earth. *Nutrition and Metabolism*, 11:34.

Obstfeld R. 1997. *Kinky Cats, Immortal Amoebas, And Nine-Armed Octopuses: Weird, Wild, And Wonderful Behaviors In The Animal World*. Publisher: Perennial. ISBN-13: 978-0062734198.

Pereira C. 2016. Metaphysics of Cosmic Energy and its Goodness. *Journal of Metaphysics and Connected Consciousness Vol 2 (In Press)*.

Pereira C. 2015. The Metaphysics of Cosmological Connectedness. *Journal of Metaphysics and Connected Consciousness Vol 2 (In Press)*.

Phillips RP. 2015. *Modern Thomistic Philosophy*. (2 Volume set) (Editiones Scholasticae). ISBN-13: 978-3868385410.

Rahnama M, Tuszynski JA, Bokkon I, Cifra M, Sardar P, Salari V. 2011. Emission of Mitochondrial Biophotons and their Effect on Electrical Activity of Membrane via Microtubules. *Journal of Integrative Neuroscience* <http://www.ncbi.nlm.nih.gov/pubmed/21425483>10(1):65-88.

Walbridge J. 2000. *The Philosophy of Illumination*. Brigham Young University; 1st edition. ISBN-13: 978-0842524575.

Westerhoff HV, Brooks AN, Simeonidis E, Garcia-Contreras R, He F, Boogerd FC, Jackson, VJ, Goncharuk V, Kolodkin A. 2014. Macromolecular networks and intelligence in microorganisms. *Frontiers in Microbiology* 5: 379. doi: 10.3389/fmicb.2014.00379.

Wissner-Gross AD and Freer CE. 2013. Causal entropic forces. *Physical Review Letters* 110: 168702.

April 1,
2016

**[[Journal of Metaphysics and Connected Consciousness 2016 (In Press)]
Pereira, C. “Let there be light” and the light was eternal: A Meta-Religious
understanding of creation and consciousness]**
